



Knutsford

Sport Vision Action Plan

To ensure provision of accessible sports and leisure facilities for all ages and abilities for Knutsford residents and those in the wider catchment area, so that various activities for improvements in individual health and wellbeing can be encouraged.

Supporting the delivery of the facilities and infrastructure the Town needs to maintain Knutsford's strong sense of community as it grows allowing it to remain an attractive, healthy and safe place to live, work and visit.

March 2019

Prepared by Debbie Jamison

On behalf of the the Sports and Leisure WG

Part of the **Knutsford Neighbourhood Plan**

Contents

1	Executive Summary.	4
2	Short/Medium/Long term actions Summary	6
3	Introduction	7
4	Vision: the opportunity	8
5	Action Plan: summary project outlines	9
6	Action Plan: summary project costs	11
7	Background: The Needs	12
8	Planning Evidence: Cheshire East Council	15
8.1	Outdoor assessments and strategies	15
8.2	Indoor assessments and strategies	17
8.3	Knutsford Strategic Sites detail from Local Plan	18
9	Appendices	21
	Appendix A Sports Vision Action Timetable	21
	Appendix B Planning Documents References	23
	Appendix C Background Evidence References.	24
	Appendix D Community Sports and Leisure Facilities.	25
	Appendix E Neighbourhood Plan Cycle Plan Map	26

1 Executive Summary

- 1.1 This document is an action plan as mentioned in the Knutsford Neighbourhood Plan (KNP) and Cheshire East Local Plan (CECLPS). (Appendix B) It has been produced by the Sports and Leisure working group of the KNP, led by a Knutsford resident. All developments are expected to deliver or contribute to sports & leisure facilities through land assembly and/or financial contributions.
- 1.2 This action plan seeks to provide supporting evidence for seeking contributions to sports and active leisure facilities in Knutsford within the development application planning process. (106 monies) It is also notice to Knutsford Town Council when considering both planning applications and the allocation of Community Infrastructure Levy monies that may be passed on by Cheshire East Council. It may also help secure any other 3rd party funding that Knutsford facilities may seek to secure, as clubs have updated their own development plans.
- 1.3 The Sports and Leisure working group of the KNP has met and produced various papers since 2016 assessing the needs and opportunities for sporting activity provision in Knutsford. The group has used the Sport England guidance to scope the information gathering and address the issues of quantity, quality, availability and accessibility of places and spaces. Many residents travel outside the area for sporting activity. The limited public maintained outdoor spaces have lapsed into disuse.
- 1.4 All of the current formal places are constrained on their sites and it must be emphasised that to add to the quantity of sports provision additional land is required for playing pitches and all major development sites such as those at LPS 36,37 and 38 should provide some sports provision on site. There are many opportunities to enhance the quality of existing provision and this is a short to medium term solution. In the long term Knutsford must find new locations for a swimming pool led Leisure centre and outdoor playing pitches and courts.
- 1.5 The nature and scale of contributions are currently informed by the CECLPS policies SC1, SC2 and SE6 and detail outlined in the strategic site descriptions . (LPS), In the future the scale may be aligned to the Sports England Facility calculator model which typically is a higher figure. Also in future the second part of the Local plan known as the Site Allocation and Development planning document (SADPD) is expected to increase the amounts requested and types of development that will be required to contribute. The KNP could be seen to be both current and future policy compliant, with its details bridging the gap. Policies SL1, Open Spaces in New Developments, SL2 Enhancing Sports Facilities and SL3 New Facilities, seek to ensure that Knutsford has this type of community infrastructure in place to meet the activity demands of an increasing living and working population.
- 1.6 Appendix 8 of the KNP (App D here) maps where all the current facilities are. There are 5 multi-sport hubs. Everybody Leisure Centre. Knutsford Academy School, Egerton Youth Club, Knutsford Sports Club and St Johns Wood Academy School. There are 3 other single sports hubs. Knutsford Football Club, Golf Club, Toft Cricket Club. There are two playing pitch sports with significant club membership with playing

based at the Leisure Centre/ Academy, namely Knutsford Rugby Club and Hockey Club. Significant other clubs are Knutsford Netball, Vikings Swimming, Gymfinity gymnastics, Badminton and Basketball. There are 4 other single sports clubs with clubhouses. Knutsford, Cranford, Crosstown Bowling clubs and Tatton Snooker Club. Dance, keep fit, martial arts, run/tri happens across all locations and in community and clubhouse halls. A significant outdoor activity area is of course Tatton Park. This has its own development plan with CEC and this plan seeks to ensure access is improved from the new residential areas. A playing field is in use for Rugby via a lease from Bruntwood at Booths Park. A small number of very poor quality, lapsed or disused local authority playing pitches exist at the Barncroft, Longridge Community Space and North Downs Longridge, adjacent to Boothsmere. None the less they are protected and could perhaps be brought back into use as the PPS suggests and to ensure that the location of sports facilities is spread around Town.

- 1.7 In Section 3 and 4 Projects for investment have been grouped into Indoor, Outdoor and Access whilst noting the CEC Sports strategies recommendations. (Playing Pitch Strategy, PPS, and the Indoor Facilities Strategy, IFS) The CEC sports strategies have provided the evidence for the items in the SL3 New facilities policy. (Leisure Centre relocation, dedicated Rugby clubhouse and pitches, a mix of public and Club run football pitches and public amenity recreation areas, a skate park, additional facilities at the Academy School). For Policy SL2 the existing multi-sport hubs and clubs have provided their own development plans to enhance the quality, availability and accessibility of their playing facilities to cater for the projected growth in population and demand on the same rate of participation as now. The PPS recommendation to consider non-turf cricket wickets has been considered in these enhancements. Other projects may come forward, as the Town develops. For example athletics. Further detail including some costs are summarised in the tables in section 3 and 4 and 5.
- 1.8 All investments should be to Sport England design guidelines and with community use agreements in place.
- 1.9 Design and access statements should use the principles outlined in the Sport/ Public Health England Active Design guide, to ensure sustainable transport routes to facilities and highlighting route improvements for cyclists and pedestrians and public transport

2 Summary of Short/Medium/Long term actions

Short Term (1 - 3 years)

- 2.1 **INDOORS:** Gym equipment and gymnasium improvements at Knutsford Leisure Centre, Knutsford Academy, Egerton Youth Club. Promote community use at St Johns Wood School. Review all the Clubhouses to cater for mixed Sports and community leisure activity use.
- 2.2 **OUTDOORS:** Secure the ground leases at Knutsford Football Club and Sports Club and community use agreements between Knutsford Academy and the Rugby and Netball clubs. Resurface the netball court area. Improve the maintenance and surface of all grass and artificial playing areas at the Leisure Centre, School, Clubs, Longridge Community space and bring back into use the Barncroft and North Downs Longridge. Ensure new playing pitch/ courts and recreational amenity provision conditioned on the planning applications for the strategic sites.
- 2.3 **ACCESS:** Work with highways team to condition in planning applications foot, cycle and public transport routes. Promote the Cycle route aspirations detailed in Appendix 5 of the Neighbourhood Plan. Promote the Active Design Guide principles in Design & access statements for planning applications.

Medium Term (3 - 10 years)

- 2.4 **INDOORS:** Resurface the Sports Hall and expand Gym at Egerton Youth Club particularly to cater for Gymnastics. Maintain the Leisure centre Sports Hall. Consider additional squash courts at Knutsford Sports Club. Upgrade changing rooms at Knutsford Football Club. Toft CC Clubhouse.
- 2.5 **OUTDOORS:** Ensure that the new developments deliver the new playing pitch/courts and recreational amenity areas. Consider artificial pitches.
- 2.6 **ACCESS:** Cycle parking facilities to be provided at all locations. Review highways delivery of foot, cycle and public transport routes.

Long Term (10+ years)

- 2.1 **INDOORS:** Relocate Knutsford Leisure centre primarily to improve the swimming pool Expand the sports hall capacity in Knutsford New Clubhouse Knutsford Sports Club
- 2.1 **OUTDOORS:** Knutsford Academy playing fields. Home for Rugby. New sites for pitches, courts, playing fields. Consider Athletics.
- 2.1 **ACCESS:** Review whether all facilities are accessible by foot, cycle, public transport from major residential areas.

3 Introduction

- 3.1 This document is in support of the Knutsford Neighbourhood Plan (KNP) Sport and Leisure policies* and should also be considered as an action plan informed by community sporting bodies as mentioned in the Cheshire East Local Plan.**(CECLPS) These plans require (open spaces) both outdoors and indoor places for sports and recreation to be provided with new developments, both residential and commercial. This can be totally new provision and/or enhanced existing provision. Protection of existing facilities is not explicitly mentioned as that is presumed as cascading down from the National Planning Policy framework. ***
- 3.2 It is a document to inform any interested parties of the needs and opportunities present in Knutsford, which as a key service centre also serves a wider catchment area than its Town residents. Information has been gathered through the KNP working group , Sport & Leisure since 2016. Project information was refreshed in Nov 2018 and February 2019.
- 3.3 In particular it seeks to provide supporting evidence for seeking contributions to sports and active leisure facilities within the development application planning process. It is also the basis upon which Knutsford Town Council can consider allocating any Community Levy it may be passed from Cheshire East Council. It may also help any other third party grant funding applications that such facilities seek to secure.
- 3.4 It aims to provide locally informed qualitative assessment of facilities and their potential to accommodate increasing demand to be healthy through activity. Quantative data is available from the Cheshire East Council Greenspaces ,Playing pitch and Indoor sports strategies, and from the Sport England and Active Cheshire data set and Public Health England.
- 3.5 It is noted that Knutsford facilities and clubs participate in a greater number of sporting activities than has been identified for evidence gathering by Cheshire East. This point has been made along with other data corrections in the consultation feedback and can be viewed in the their report.
- 3.6 It is also a requirement of the Plans that good design is demonstrated by following the Active Design principles as outlined in the Guide produced by Sport England and Active Health England. This leads to consideration of cycleways and footpaths and public transport. Appendix 5 of the KNP (App E here) makes useful cycle route suggestions . Any facility development should be to Sport England design & cost guidelines. When planning sports pitches - both natural and artificial - the most ecologically beneficial options should be considered.
- 3.6 As Knutsford lacks publicly run facilities all investments should be covered by a community use agreement where some pay and play access is granted.

Notes *, **, *** in appendix B Planning Document references

4 Vision the Opportunity

4.1 The Knutsford Neighbourhood Plan Vision sets out to:

- ensure that the Town thrives economically and socially as a historic market town
- protect and enhance the Town's character, variety of buildings and natural environment
- support the delivery of the facilities and infrastructure the Town needs
- maintain Knutsford's strong sense of community as it grows allowing it to remain an attractive, healthy and safe place to live, work and visit"

4.2 The Knutsford Neighbourhood Plan Sports and Leisure Objective:

To ensure provision of accessible sports and leisure facilities for all ages and abilities for Knutsford residents and those in the wider catchment area, so that various activities for improvements in individual health and wellbeing can be encouraged.

4.3 The three Sports and Leisure Policies of the Neighbourhood

SL1 Open Space in New Developments

SL2 Enhancing Existing Sport & Leisure Facilities

SL3 New Sport & Leisure Facilities

have been developed through working closely with local groups and organisations in the Town to ensure that any new provision complements the existing mix and that contributions are sought from the larger developments to help with the delivery of enhanced facilities throughout the Town.

4.4 The Town has a number of locations (hubs & clubs) where sporting facilities are provided and, within them, clubs that cater for a variety of activity and ages and sporting ambition from grassroots social participation to more elite competitive performance.

4.5 It is strongly believed that such variety contributes to the accessibility and encourages people to participate. The majority of the action plan is formed of projects to enhance the existing facilities.

4.6 That said it was also identified that 5 ambitions will require new land and /or locations. These are outlined in policy SL3 and relate to the swimming pool at the Leisure Centre, rugby, additional football pitches and amenity space, a skate park. There is also an opportunity to add to the playing fields at the Knutsford Academy High School.

5 Action Plan Summary Project Outlines

	Leisure Centre	Academy School	Egerton Youth Club	Knutsford Sports Club	Knutsford Football Club	Toft Cricket Club	Knutsford Rugby Club	Skate Park	Lapsed, Disused or Underused
Lease Land	Relocate	New Land	Make Up Grass Pitches	New Boundary	New Agreement New Land	New Land Booths Park	Use/Lease New Land	New Land	
Indoor	Swim Pool Change Room		Clubhouse	Clubhouse	Changing Rms/ New Clubhouse	Clubhouse	Clubhouse		St Johns Wood School
	Gym Stations	Lower Gym Hall	Gym Extend	New Squash Courts					
	Studios		Sports Hall Floor	Archery Range Extension					
	Yes	Yes	Yes	Yes					
IBF Strategy									
Outdoor	Astroturf	Netball Courts	3G Refurb	Tennis Courts	11x11 Youth Pitch Age15/16	Junior Pitch			Longridge Community
		Pitch Drainage	4G New	Field Drainage	Pitch Surround & Drainage				North Downs Longridge
			Spectators View/Goals	Cricket Practice	Secure Boundary				Barncroft
			Floodlights		Floodlights				
			Grass Pitches		3G				
PPS Strategy	AGF Hockey Resurface	School Fields CUA	Resurface & New AGF	Non-turf wkt	New AGF	Non-turf wkt	Maintain CUA		Bring back
Access to All and Tatton Park	Cycle & Store	Cycle & Store	Cycle & Store	Cycle & Store	Cycle & Store	Cycle & Store			
	Bus Route	Bus Route	Bus Route	Bus Route	Bus Route	Bus Route			
	Footpath	Footpath	Footpath	Footpath	Footpath	Footpath			
	Parking	Parking	Parking	Parking	Parking	Parking			

5b Sports Activity Clubs at Locations

	Leisure Centre	Academy School	Egerton Youth Club	Knutsford Sports Club	Knutsford Football Club	Toft Cricket Club	Knutsford Rugby Club	Skate Park	Lapsed, Disused or Underused
Community								X	X
Football		X	X		X				X
Rugby		X					X		
Hockey	X								
Cricket				X		X			
Tennis				X					
Archery				X					
Netball	X	X							X
Swim	X								
Squash	X			X					
Gym	X								
Gymnastics		X	X						
Badminton	X		X						X
Basketball			X						X
Volleyball	X								X
Run/Tri	X		X						
Trampoline	X								X
Dance	X		X	X					
Fitness									
Marial/Box	X		X						
Tumbletots			X						
Table Tennis				X					X
Athletics		X							
Rounders		X		X					X

Leisure Centre		Academy School	Egerton Youth Club	Knutsford Sports Club	Knutsford Football Club	Toft Cricket Club	Rugby Club	Skate Park
Lease Land	New land	New land	Make up grass pitches	New boundary	Legal fees	New Land	Use/lease New Land	New land
Indoor	New £12m		£120K	£310-£500K	£90-210K	£500K	Clubhouse	
	Gym stations	£40K	£175K	£200K				
			£75K	£20K				
Outdoor	£100k	£70k + £50K	£100k	£80K	£100K	new jnr pitch		
		Bexton £42K	£900K	£10k	£22k + £45k			
		West £106K	£115k	£50k	£30k			
			£60k		£42k			
			Grass pitches?		£500k			
Access	Cycle & Store	Cycle & Store	Cycle & Store	Cycle & Store	Cycle & Store	Cycle & Store		
	Bus Route	Bus Route	Bus Route	Bus Route	Bus Route	Bus Route		
	Footpath	Footpath	Footpath	Footpath	Footpath	Footpath		
	Parking	Parking	£12k	Parking	£22k	Parking		

7 Background the Needs

- 7.1 The existing main locations in Knutsford are identified in Appendix 8 of the Knutsford Neighbourhood Plan (Appendix D). Some are multi-sport hubs and others single sport clubs. Schools also provide valuable facilities. There are limited municipal playing fields at the Barncroft, North Downs adjacent to Boothsmere and Longridge and one privately leased in use at Booths Park for rugby. All the hubs have had demand for sports and activities which they cannot fully satisfy e.g. rounders and table tennis and keep fit/ dance exercise and martial arts. Swimming demand is displaced to Northwich, Wilmslow Macclesfield, Crewe, Stockport, Manchester. A summary of hubs and clubs is listed below.

Hubs: Indoor and Outdoor facilities - multi-club

Knutsford Leisure Centre

(swimming pool, gym, rooms, sports hall, squash court, astroturf)

- Vikings Swimming Club
- Hockey Club
- Volleyball Club
- Badminton Club
- Netball Club
- Knutsford Tri Club

Knutsford Academy community use

(netball tennis courts, football rugby pitches, gym hall)

- Knutsford Netball Club
- Knutsford Football Club
- Knutsford Rugby Club
- Gymfinity gymnastics Club

Egerton Youth Club

(football pitches grass & 3G, sports hall, gym, rooms)

- Egerton Football Club
- Gymfinity
- Canute Basketball Club
- Badminton

- Martial Arts/ Boxing
- Netball
- TumbleTots

Boothsmere Academy (formerly St Johns Wood school) community use
(Sports Hall, MUGA)

- Knutsford Football Club
- Welcome Youth Club

Knutsford Sports Club
(clubhouse, archery hall, tennis courts, squash courts playing field)

- Archery
- Cricket
- Tennis
- Squash
- Table tennis
- Dance/ Keep fit

Clubs with clubhouses

- Knutsford Football Club
- Toft Cricket Club
- Knutsford Golf Club
- Knutsford Bowling Club
- Cranford Bowling Club
- CrossTown Bowling club
- Tatton Snooker & Billiards

Clubs with no dedicated clubhouse

- Knutsford Rugby Club

Hubs and Clubs declared development projects

Knutsford Leisure Centre

Refer to Commissioning Manager, Cheshire East Council Mark Wheelton & community.

Swimming pool changing rooms, gym stations, studios, sports hall, astroturf.
Relocation.

Knutsford Academy community use

Refer to Marketing & Community Development Manager James Routs

Refurbish and add to the netball courts at Bexton Road & Westfield Drive to enable more netball club practice and competition tournament hosting. Improve the condition & drainage on community use rugby and football pitches. Refit the Lower school sports hall gymnasium.

Egerton Youth Club and Football Club

Refer to Chair of football club Tom O'Donnell

Refurbish the 3G pitch surface, Add a 4G pitch. Add floodlights to grass pitch. Improve spectator viewing areas and goals. Add new grass pitches. Extend second floor gym area, renew sportshall floor, install renewal energy system to reduce costs and car park management system.

Knutsford Sports Club

Refer to Chair Martin Barber Redmore and Secretary John Hutcheson

Car park, clubhouse, mains drains & pitch drains, LED lights & reduced energy use: tennis courts 6 and 7: indoor archery range; additional squash courts; cricket practice & wickets. Consider non turf wicket.

Knutsford Football club

Refer to Chair Jimmy Evans

Lease – minimum 40 years. Secure boundaries to prevent unauthorised access. Add a youth pitch , upsize changing rooms, new clubhouse & visitor facilities improve maintenance of pitches, look to install floodlights for future step grades. Install small 3G. Extend and refurbish car park, Upgrade Security Systems

Toft Cricket Club

Refer to chair Nigel Muirhead

A new clubhouse and junior pitch adjacent to the current site. Consider non turf wicket.

Knutsford Rugby Club

Refer to President Anthony Evans

Improve and expand playing pitches at Knutsford Academy & Booths Park and seek to combine clubhouse and pitches on one site.

8 Planning Evidence

Outdoors

Green Spaces 2018 Update

- 8.1 “7.34 The Playing Pitch Strategy provides new evidence in terms of outdoor sports provision. In the Knutsford Analysis area shortfalls exist in football, cricket and rugby provision. Knutsford RUFC require additional provision possibly provided alongside Knutsford Academy Plans. Egerton Youth Club are key centres. Knutsford Academy (Upper), Knutsford Leisure Centre, Knutsford Sport Club and Manchester Road are all Local Sites.”
- 8.2 Knutsford Academy Lower should also be listed as this is where the joint community use rugby pitches are. Designation is based on the playing pitch sports of Football, Hockey, Rugby, Cricket Lacrosse, Clearly Toft cricket club is a centre of excellence and should be KEY. Knutsford Football club could be KEY if lease secures investment. Knutsford Sports Club is key for outdoor sports of Tennis and Archery.
- 8.3 Deficiencies in Children’s playarea and amenity space was stated going back to earlier open spaces 2012 data.
- 8.4 It is clear that Knutsford lacks municipal pitches and that the existing facilities have no room for quantitative i.e. additional pitch development. That is why it is important that the larger development sites provide additional land for extra playing pitches.

Cheshire East Local Plan 2017 Policy SE6 - Green Spaces

- 8.5 “Strengthening the contribution that sport and playing fields, open space and recreation facilities make to Cheshire East’s Green Infrastructure network by requiring all development to:
- i) Protect and enhance existing open spaces and sport and recreation facilities;
 - ii) Encourage multiple use and improvements to their quality;
 - iii) Provide adequate open space (as outlined in Table 13.1);
 - iv) Contribute to the provision of outdoor sports facilities in line with Policy SC2;
 - v) Create or add to the networks of multi-functional Green Infrastructure;
 - vi) Secure new provision to help address identified shortages in existing open space provision, both in quantity, quality and accessibility;
 - vii) Locate open space facilities in appropriate locations, preferably within developments;
 - viii) Promote linkages between new development and surrounding recreational networks, communities and facilities.

Playing Pitch Strategy 2017 and Consultation Responses

8.6 Knutsford Area summary.

Knutsford Clubs and residents did challenge some of the data and conclusions in the report.

8.7 It is noted that the strategy only address the outdoor sports of rugby, cricket, football, hockey & rugby. None the less conclusions were drawn for deficiency in playing surfaces for all. In the consultation feedback some of the assessment data was questioned. Knutsford Football Club could expand if it secures a long term lease. The question of how many football pitches are needed if extra artificial turf is used was raised. It was stated that Knutsford has clubs with outdoors for golf, archery, tennis, and bowls. Tennis and Archery require more space particularly at peak times for competitive sport. There is no spare playing field capacity to cater for additional outdoor sports such as rounders or skateboarding. The municipal fields at the Barncroft and Longridge and North Downs adjacent to Boothsmere could be identified as pitches for improvement.

8.8 Knutsford Leisure centre is home to Knutsford Hockey and as such the artificial pitch must remain suitable for hockey.

8.9 The current all weather pitch is of the sand filled variety and will need re-laying and refurbishing preferably as a 3G surface within the next 2-3 years.

Open Spaces 2012 Knutsford Area

8.10 Amenity informal open space and playing field and children's equipped playareas are detailed in the map. This includes playing field land leased from Bruntwood at Booths Hall and lapsed use Local Authority maintained playing field at The Barncroft, NorthDowns/Longridge and Longridge Community space. Green infrastructure could be improved – there are no local greenways.

8.11 Amenity and children's equipped playarea space was stated as deficient.

8.12 This has been updated by the Neighbourhood Plan in their consideration of Local Greenspaces and Community & Sporting facilities appendices.

Indoors

Built Facility 2013 Statement and 2017 Indoor Facilities Statement

- 8.13 The remit of these statements covered swimming pools, sports halls, indoor tennis and indoor bowls.
- 8.14 This focused on the Everybody Leisure centre pool and sports hall. Facilities are also at Egerton Youth Club, St Johns Wood Academy and Knutsford Sports Club(squash)
- 8.15 “Knutsford (Leisure Centre)is a joint use facility developed in the 1970s adjacent to and shared with Knutsford High School . Providing a community swimming pool the Leisure Centre is defined as a key facility. In general the Centre is now in need of further investment and refurbishment and the lack of sufficient capacity to meet growing educational and community demands (and in particular the small swimming pool) needs to be addressed. The current layout of the indoor facilities, and in particular the swimming pool, is constrained which will make the development of further capacity at the site more difficult than similar facilities elsewhere. ”
- 8.16 Develop a whole site plan to provide an enhanced community sport and leisure offer in the Knutsford area. This should ideally build on the success of the existing dual use agreement, retain the existing size sports hall for school use and provide the following: 5 lane 25m pool Extended Health and Fitness offer by providing a larger fitness suite as well as two group fitness studios.
- 8.17 “The strategic programming of sports halls needs to be considered to enable a balanced spread of sports and the use of the best facilities for talented athletes. This is specifically relevant for sports such as netball, basketball and badminton which are often marginalised at the expense of indoor football. There is also a need to address key shortfalls in provision for gymnastics. The overall quality of pools in the area is a concern, especially in the longer term. The age of the pool stock across Cheshire East averages 39 years. Knutsford and Sandbach are identified as areas with poor quality swimming pools; but there are no plans currently in place to address this.”
- 8.18 [Knutsford] “There is one six court hall, one four court hall and one three court hall. The six and four court halls are rated below average. There is one four lane 25m pool (below average), two squash courts and 71 community accessible fitness stations. It is anticipated that there will be 950 new houses and a population increase of 1,501 people creating additional demand for 0.5 badminton courts, and 0.5 lanes of a swimming pool. Key challenges: To improve the quality of sports halls and increase the quality and provision of both water space and fitness provision available within the town.”
- 8.19 “There are no dedicated indoor bowls facilities it is an adhoc provision of village halls and other sports clubhouses. There are no indoor tennis facilities and demand is displaced to the North.”

Local Plan Strategy 2017

Site LPS 36: North West Knutsford

8.20 15.429 of the Cheshire East Local Plan Strategy:

North West Knutsford consists of 3 sites which, together, comprise areas of open countryside adjacent to, playing fields, public rights of way, allotments and fishing ponds.

They present an opportunity for high quality, sympathetic low density residential development with community facilities and the creation of open space. Development will integrate with existing facilities and communities and provide links to the settlements to the south and east of the sites.

Appropriate:

ii. Provision of open space, and provision of / contributions toward sports and leisure facilities;

The existing sports grounds situated between Mereheath Lane and Manchester Road to the south of LPS 36(C) are removed from the Green Belt. These are identified as protected open space within LPS 36 as shown on Figure 15.43 and will be retained in their entirety as such, and enhanced if possible. The existing allotment gardens to the east of Mereheath Lane remain in the Green Belt as protected open space.

g. Any replacement and/or new sports provision should be in accordance with an adopted up to date and robust Playing Pitch Strategy and Indoor Sports Strategy and with Policy SC 2 'Indoor and Outdoor Sports Facilities'.

h. Provision of additional community facilities.

j. Improve the connectivity and accessibility into and out of the sites to the town centre and wider local area with the provision of, or contribution to, cycle paths and pedestrian linkages.

t. The development of the new business park within Site LPS 36(B) should:

Provide for pedestrian and cyclist links with the adjacent housing development site;

u. The development of site LPS 36(C) should:

be planned in a comprehensive way;

provide for open space and landscaping (and no built development) within the area removed from the Green Belt and identified as 'protected informal open space' - this area to comprise informal open space incorporating landscaped

belts along both Mereheath Lane and the eastern edge of built development on the site, each landscaped belt to be a minimum of 15 metres wide and complementary to the landscape character of the surrounding area; and

provide a suitable landscape screen within the area allocated for housing adjacent to its eastern boundary with the 'protected open space'. The details of this landscape screen should be informed by the required Landscape Character Assessment and

provide appropriate mitigation as part of a comprehensive landscape scheme; and

provide for the long-term future management of the informal open space and landscaped belts.

- 8.21 15.438 This particular area of Knutsford currently accommodates a number of sports and community facilities, which provide a valuable contribution to the health and well being of the local community. Contributions to the enhancement of existing facilities either on or off site will be expected.
- 8.22 15.439 New development will put increased pressure on existing community facilities and therefore, on or off site contributions to local community facilities should also be secured in order to ensure the sites are sustainable.
- 8.23 15.442 The protection enhancement and some new provision of PROW, sports and leisure facilities will be required in accordance with Policy SC 2 'Indoor and Outdoor Sports Facilities' in line with an appropriate action plan.
- 8.24 15.443 Details of Construction Environment Management Plans, landscaping, green infrastructure and open space proposals should be submitted to the council during any future planning application process on the sites as part of sustainable development proposals and their proximity to European site (consisting of Special Areas of Conservation, Special Protection Areas and / or Ramsar sites).
- 8.25 15.447 Site LPS 36(C) provides an opportunity to create a high quality, distinctive and comprehensively planned new residential neighbourhood with associated community facilities. The eastern-most part of the site is identified as protected informal open space. This enables new built development to be set back from Mereheath Lane and allows for appropriate landscaping, in the interests of protecting the setting of, and approach to, Tatton Park. The informal open space and landscaped belts could accommodate sustainable drainage features and they provide an opportunity to create new ecological habitats to provide net gains in biodiversity for the allocated site as a whole.

The opportunity should also be taken to provide managed, public access within the landscaped belt to the north of the site. This landscaped belt can be created in the Green Belt along the northern boundary of the site and will serve to strengthen the new Green Belt boundary.

Site LPS 37: Parkgate Extension

- 8.26 5. Pedestrian and cycle links to new and existing residential areas, shops, schools and health facilities including a permanent diversion route of public footpath (Knutsford FP11) and at least three 20 metre wide links between the housing area and the woodland buffer;
- c. Improve the connectivity and accessibility into and out of the site to the town centre and wider local area with the provision of, or contribution to, cycle paths and pedestrian linkages.
- 8.27 15.457 Improved access and infrastructure is considered to be key to ensuring the site's sustainability and integration within the wider community. New access to the site off Parkgate Lane will be required together with a new access to Mobberley Road, over or under the railway line. Section 106 contributions will be sought to improve additional pressure to road networks within Knutsford and social infrastructure to secure a sustainable form of development.
- 8.28 15.458 Details of Construction Environment Management Plans, landscaping, green infrastructure and open space proposals should be submitted to the council during any future planning application process
- 8.29 15.460 Any replacement and/or new sports provision should be in accordance with an adopted up to date and robust Playing Pitch Strategy and Indoor Sports Strategy and with Policy SC 2 'Indoor and Outdoor Sports Facilities.

Site LPS 38: Land Sout of Longridge

- 8.30 15.462 The land south of Longridge site presents an opportunity to deliver a high quality, sustainable residential development to contribute to the identified housing requirement for Knutsford.
2. Provision for public open space within the site, as well as improving pedestrian and cyclelinkages; and
3. Provision of a landscape buffer adjacent to Booths Mere Local Wildlife Site.
- b. Provision should be made for formal recreation space including children's play facilities and informal public open space within the site, supplementing existing green infrastructure.
- e. Provision of pedestrian and cycle links and retention of existing public rights of way. Provision of green corridors around existing natural features plus links to the wider footpath network.

Appendix A: Sports Vision Action Timetable

Short - 1 to 3 years, Medium - 3 to 10 years, Long - 10+ years

	Action	Stakeholders	Lead By	Timescale
1	Promote this action plan and access ideas. Active Design for design and access statements	Cheshire East Planning Cheshire East Officers and Service Commissioners - Sports and Highways	Debbie Jamison	SHORT
2		Town Councillors		
3		Active Cheshire		
4		Sport England		
5		ESAR		
6	New pitches and amenity Children's play on new sites	CEC planning 106 Cheshire FA	Debbie Jamison	SHORT
7	Secure leases	Knutsford FC Tatton Group	Jimmy Evans/ Tatton Group	SHORT
8		Knutsford Sports Club Tatton Group	KSC Committee Tatton Group	SHORT
9	Community use agreements	St Johns Wood School	Debbie Jamison	SHORT
10		Rugby Club/ Academy	Committee Academy	SHORT
11		Netball Club/ Academy	Committee/ Academy	SHORT
12	Indoor gym equipment	Everybody Leisure Centre	EB CEO Commissioner	SHORT
13	Indoor gym	Knutsford Academy	Academy	SHORT
14	Indoor review Clubhouses changing facilities future plans	All clubs Toft CC/KFC/KSC	All committees	SHORT
15	Outdoor netball courts resurface & add new	Knutsford Academy/ Netball/ CEC planning	Committee Academy Everybody Leisure Commissioner	SHORT
16	Outdoor AstroTurf at Leisure centre	ESAR Cheshire East Planning Hockey	CEO Commissioner Committee	SHORT
17	Outdoor pitches at the Academy	Rugby Academy Cheshire East Planning	Committee Academy CEC Officers	SHORT
18	Outdoor AstroTurf resurface at Egerton Youth Club	Egerton YC Egerton FC	Trustees Committee	SHORT
19	Outdoor Longridge Community pitch	Cheshire East Planning ANSA	Commissioner Officer	SHORT
20	Tennis Courts	Knutsford Sports	Committee	SHORT
21	Indoor gym extend Egerton Youth	Egerton YC	Trustees	SHORT/MEDIUM
22	Indoor resurface sports hall Egerton Youth Club	Egerton YC	Trustees	MEDIUM
23	Indoor resurface sports hall Leisure Centre	ESAR CEC Planning	CEO EBL Commissioner	MEDIUM
24	Indoor add squash courts at Knutsford Sports Club	Knutsford Sports Club Cheshire East Planning	Committee	MEDIUM

	Action	Stakeholders	Lead By	Timescale
25	Indoor New Clubhouse Toft cricket club	Toft CC	Committee	MEDIUM
26	Outdoor Changing Knutsford FC	Knutsford FC	Committee	MEDIUM
27	Outdoor Delivery of new football pitches	Cheshire FA Cheshire East Planning Egerton FC Knutsford FC	CEC Officer	MEDIUM
28	Outdoor consideration of new artificial football pitches	Cheshire FA Cheshire East Planning Egerton FC Knutsford FC	Officer Committees	MEDIUM
29	Outdoor new non turf cricket wickets	Toft CC Knutsford CC Knutsford Sports Club Cheshire CC CEC planning	Club Committees Officer	MEDIUM
30	Outdoor new junior cricket pitch Toft CC	Toft CC	Committee	MEDIUM
31	Outdoor New skatepark	Knutsford Town Council		MEDIUM
32	Access review delivery of new foot, cycle, public transport as a result of planning application development	Knutsford Town Council		MEDIUM
33	Outdoor amenity & Children's play areas – review new delivery	Knutsford Town Council		MEDIUM
34	Indoors expand the sports hall capacity in Knutsford	Leisure Centre		LONG
35	Indoor New Swim Relocate Leisure Centre	Cheshire East Council ESAR		LONG
36	Indoors new Clubhouse Knutsford Sports Club	KSC		LONG
37	Outdoor New home for Rugby	Rugby Club		LONG
38	Outdoors expand playing fields Consider athletics facility	Knutsford Academy CEC planning		LONG
39	Access – Review	KTC CEC planning		LONG

Appendix B: Planning Policy Document References

(*) Knutsford Neighbourhood Plan

- SL1 (Open Space in New Developments)
- SL2 (Enhancing Existing Sports and Leisure Facilities)
- SL3 (New Sports and Leisure Facilities)

13.7 & 13.11 A Sport Vision Action plan has been prepared as a supporting document and should be considered in conjunction to Policies SL1, SL2 and SL3.

(**) Cheshire East Local Plan Strategy

- SC2 (Indoor and Outdoor Sporting Facilities)

2. Support new indoor and outdoor sports facilities where:
- i. They are readily accessible by public transport, walking and cycling; and
 - ii. The proposed facilities are of a type and scale appropriate to the size of the settlement; and
 - iii. Where they are listed in an action plan in any emerging or subsequently adopted Sports Strategy.
- 12.18 In terms of the development of appropriate facilities, this will be determined through evidence from the Playing Pitch Strategy and Indoor Sports Strategy process, other work with the community and sports bodies, to determine a particular club or community's needs.

Cheshire East Council Green spaces strategy 2018 update

Cheshire East Local Plan Strategy Policy SE 6 Table 13.1

Retained Macclesfield Borough Council Local Plan

- RT6 (Sites Allocated for Additional Recreational Purposes (table one))
- Land adjacent to Booths Mere/Longridge for playing fields (2.4 hectares)
- Land at Manchester Road for playing fields (3 hectares)

Cheshire East Site Allocations and Development Policies (Emerging)

- REC 1 (Green/open space protection)
- REC 2 (Indoor sport and recreation implementation)
- REC 3 (Green space implementation)

These add to Table 13.1 in CELPS Policy SE6 for outdoor sports 60sqm per dwelling or 1.6ha per 1000 houses. Clarity for indoor sports and reference to need for outdoor space in commercial/employment development.

National Planning Policy Framework 2018

- Chapter 8 paragraphs 96-101
- Chapter 9 paragraphs 102 and 110

Appendix C: Background Evidence Document References

Knutsford Neighbourhood Plan

Egerton Youth Club statement 2019

KNP Committee Nov 2018 Project Ideas from the Sports & Leisure WG

Includes email statements from Knutsford Scouts, Toft CC and Egerton Youth Club.

Knutsford Sports Club Development Plan Nov 2018

Knutsford Football Club Development plan Nov 2018

Knutsford Academy Community facilities investment Nov 2018

Knutsford Academy and Everybody Leisure presentation 2017

Working group meeting notes

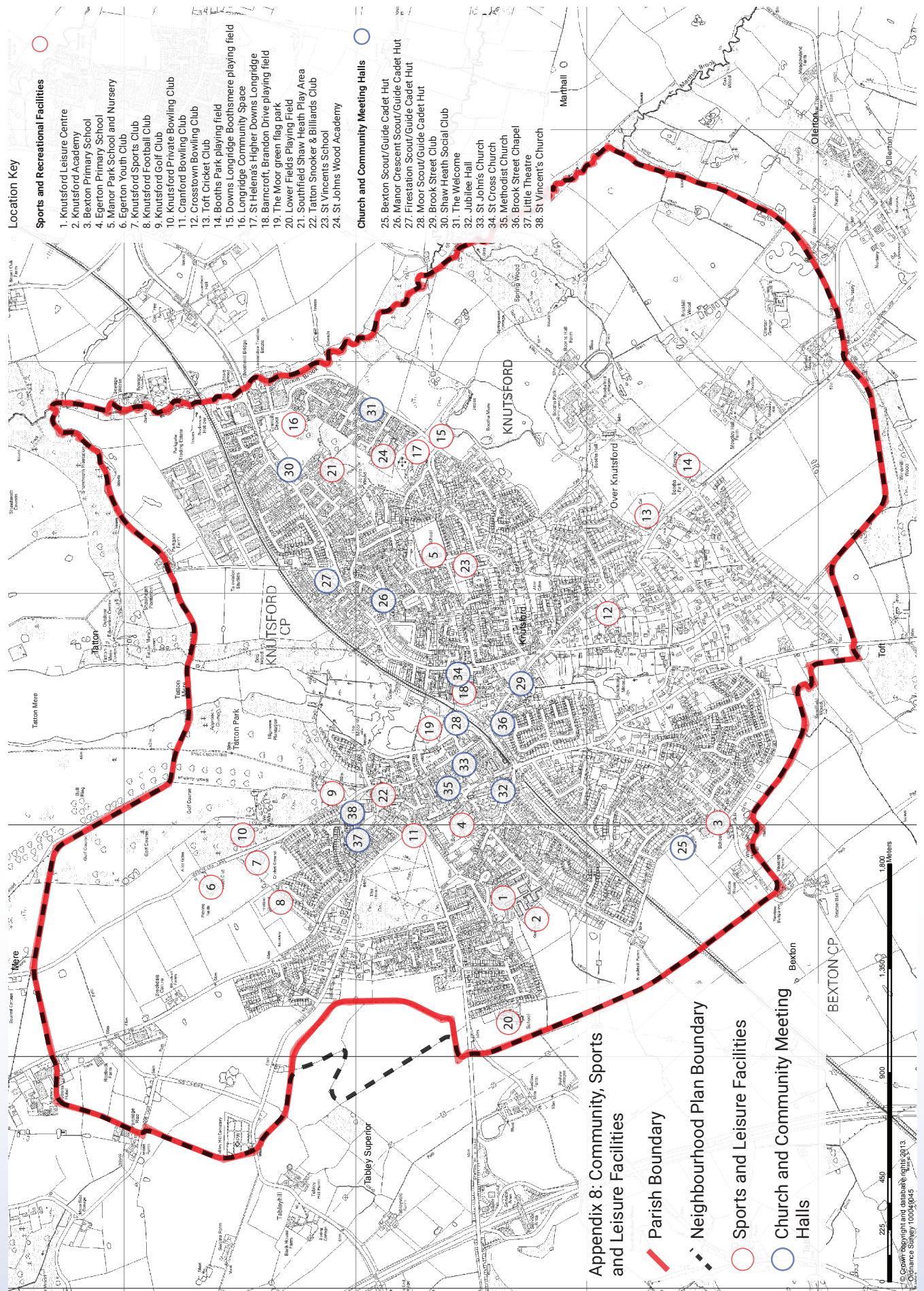
Cheshire East Local Plan

PPS Playing Pitch Strategy KKP March 2017 The Knutsford pages

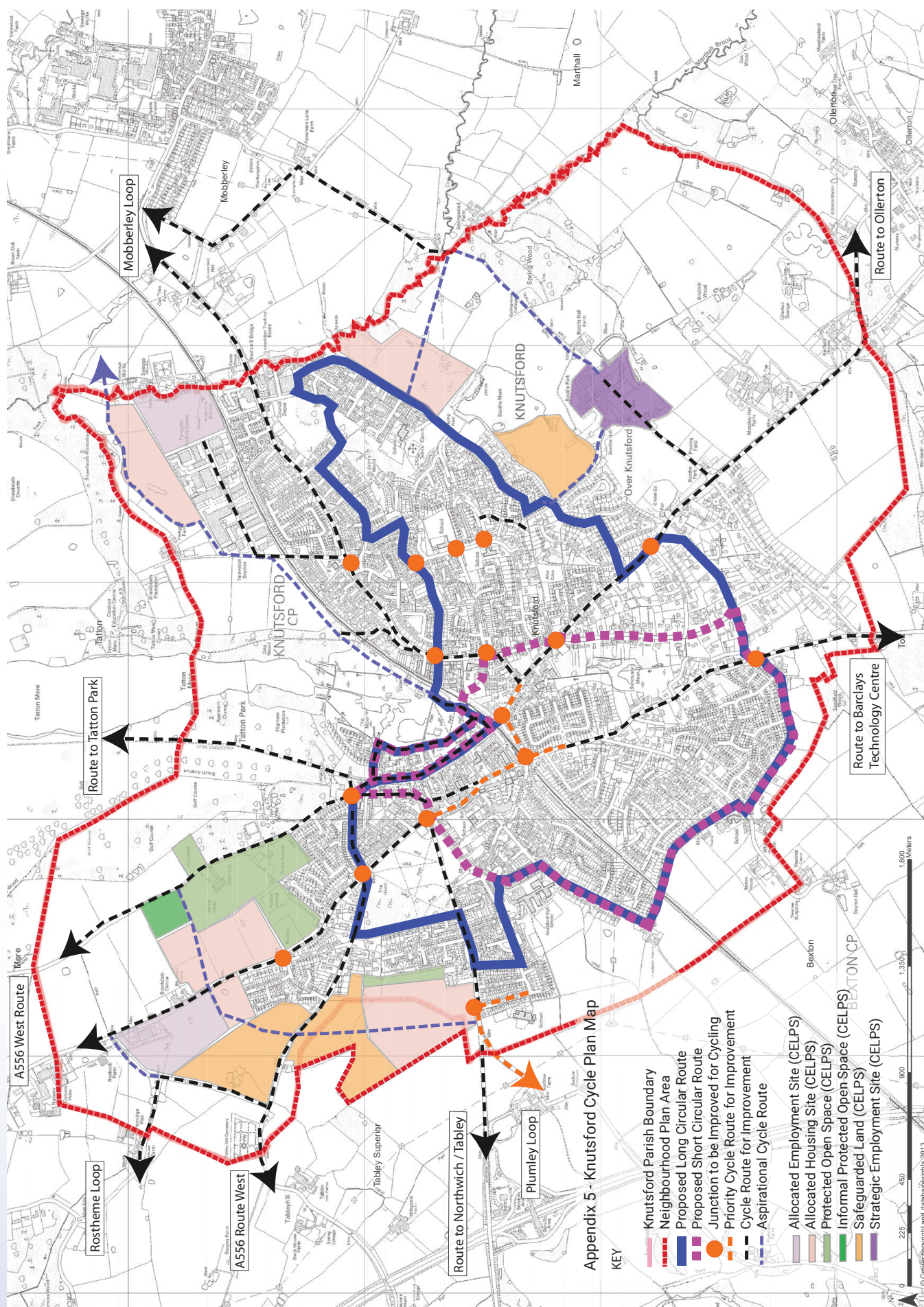
IFS Indoor Facilities Strategy KKP 2017

Sports Strategies consultation report

Appendix D: Knutsford Community, Sports and Leisure Facilities



Appendix E: Knutsford Cycle Plan Map



Published by:

Knutsford Town Council
Council Offices, Toft Road, Knutsford, WA16 6TA
www.knutsfordtowncouncil.gov.uk



Knutsford

Neighbourhood Plan

