



Knutsford Neighbourhood Plan

Knutsford Open Spaces Assessment

Produced by Cheshire East Council, March 2012

Contents

1	Socio-Economic Profile	2
2	PPG17 Typology Summary	3
	Type 1: Parks & Gardens	3
	Type 2: Natural & Semi-Natural Urban Greenspaces	4
	Type 3: Green Corridors	5
	Type 4: Outdoor Sports Facilities	5
	Type 5: Amenity Greenspace	7
	Type 6: Provision for Children & Teenagers	9
	Type 7: Allotments, Community Gardens & Urban Farms	10
	Type 8: Cemeteries & Churchyards	10
	Type 9: Accessible Countryside in Urban Fringe Areas	11
	Type 10: Civic Spaces	12
3	Conclusion	13

Appendices

A	Quality Report	15
B	Outdoor Sports Facilities Report (Type 4)	16
C	Provision for Children & Teenagers Report (Type 6)	18
D	Potential Future Site Upgrade Information	19

1 Socio-Economic Profile

1 Socio-Economic Profile

1.1 Knutsford is a small market town with a population of about 12,570. It is located in the north-western part of the Borough, close to Altrincham, Wilmslow and Northwich; Macclesfield and Manchester are also less than 19km away. The town is bounded by Birkin Brook to the east and the extensive historic Tatton Park to the north. The A5033, A50 and A537 pass through the town, which also lies within 5km of junction 19 of the M6.

1.2 Modern-day Knutsford covers three medieval settlements: Nether Knutsford, Cross Town and Over Knutsford. Knutsford grew in size and influence throughout the 18th and 19th centuries. The town retains much of its historic architecture, notably from the Georgian era. Following the Second World War, overspill estates were created to accommodate families from Manchester.

1.3 Knutsford's population structure generally follows the average for Cheshire East, although the town does possess a slightly higher proportion of people aged 65 and over. Knutsford has a comparatively strong economy, and a generally affluent and well-educated workforce. There is a relatively even split between residents who work within the town and those who commute to work elsewhere; the most common destinations for out-commuters are the Manchester, Trafford and west Cheshire areas.

1.4 The land around Knutsford is dominated by large historic houses and their accompanying estate farms, woodlands and lodges. The transition between town and country around Knutsford is softened by patches of densely wooded areas. The countryside that surrounds the town is designated as Green Belt. There is a small area of flood risk on the eastern periphery of the town where the Birkin Brook flows.

1.5 Knutsford has a Town Council and is part of the Knutsford Local Area Partnership.

2 PPG17 Typology Summary

2 PPG17 Typology Summary

Type 1: Parks & Gardens

Quantity

2.1 There is no formal park as such in Knutsford but the Moor (9KNW and CKNW) has the character of a village green and in contrast to the busy town centre provides a peaceful open space lined on one side by mature lime trees. The site is at the southern tip of Tatton Mere - lake and reed beds - and has large grassed areas, ponds, seating, picnic area and a children's play area.

Quality

2.2 The Moor is an excellent quality site, which achieved the Green Flag award in 2009 and 2010. The site is managed and maintained by Cheshire East Council and is assisted by the Friends of the Moor, who are a group of people in Knutsford who have volunteered to work together to promote the use of the Moor for leisure and recreation.

Accessibility

2.3 The Moor is located on the edge of the town centre in a central position and is accessible by a number of footpaths. Residents living on the edge of the settlement are just outside the 1km distance threshold.

Biodiversity

2.4 The Moor is already a wildlife haven being on the edge of the Mere - an internationally important wildlife site - but there are opportunities to vary biodiversity with the management of the grassed areas, pond creation and bulb planting, some of which is carried out by the Friends Group.

Issues

2.5 Some residents living on the edge of Knutsford are at a distance of more than 1km from the Moor.

Recommendations

- Consider how to improve access to the Moor for residents living on the edge of Knutsford.

2 PPG17 Typology Summary

Type 2: Natural & Semi-Natural Urban Greenspaces

Quantity

2.6 Knutsford has 13 sites in this category. Natural and semi-natural open space forms the highest category of open space due to presence of the moors, meres and brooks and associated woodland. The main strategic sites are the Moor (9KNW), the Heath (2KNW), the Little Heath (3KNW), Sanctuary Moor (4KNBW), Shaw Heath/St Johns Wood (13KOW), Booths Mere (11KNBW) and Birkin Brook (26KOW).

2.7 The Heath, originally home to a racecourse, is now an area of lowland heathland close to the town centre, consisting of a mosaic of oak woodland, clumps of birch, heather, gorse, tall herb and grassland. A fair is held on The Heath each year to mark the Knutsford Royal May Day celebrations.

2.8 The Moor is one of the largest areas of fen and reed in Cheshire, consisting of open water, reedswamp, tall fen and willow carr. Plant species of interest include marsh fern, cowbane, cyperus sedge and wood horsetail.

2.9 Sanctuary Moor is a large wooded area of wetland that runs along the back of the properties facing Legh Road and Toft Road. It is classed as a Nature Conservation Priority Area.

2.10 Shaw Heath/St John's Wood is also classed as a Nature Conservation Priority Area. It is located in the eastern part of the town behind the Longridge housing estate and has various footpaths through the site and areas for children's play.

Quality

2.11 The Moor is a Green Flag excellent quality site. In terms of quality the other sites were assessed as: five good, six average and one poor. The average and poor quality sites suffer from problems with litter or have poor access.

Accessibility

2.12 The sites are fairly well distributed across Knutsford. The Moor is in a central location; the Heath and Little Heath are in west Knutsford, Sanctuary Moor is in the south and Shaw Heath/St John's Wood and Birkin Brook are located in the east. Most residents are within the 5 to 10 minutes walking threshold.

Biodiversity

2.13 There are opportunities to continue to enhance these natural green spaces as the variety of heaths, meres, brooks and woodland adds to wildlife diversity. Positive management is vital for the preservation and enhancement of these sites as wildlife areas.

2 PPG17 Typology Summary

Issues

2.14 It will be important to access funding sources for the continued protection and enhancement of Knutsford's natural and semi-natural open spaces.

Recommendations

- Consider how to access funding sources for the continued protection and enhancement of Knutsford's natural and semi-natural open spaces.

Type 3: Green Corridors

Quantity

2.15 There were no sites recorded as green corridors as Knutsford does not have any river or canal corridors or disused railway lines used as footpaths/cycle routes. Knutsford does have areas where there are Public Rights of Way such as The Moor - Footpaths 7 and 8 - and the Manor Park area where Footpath 13 links across to Spring Wood to the east of Knutsford.

2.16 With Tatton Park on its northern extremity, public access for walking is good, however, the number of Public Rights of Way in the area is limited; there are a few public footpaths within the town, as mentioned previously, mainly running in an east-west trajectory. A couple of options exist to access the countryside to the south of the town, with no provision for cyclists or horse riders.

Issues

2.17 There are few green corridors in Knutsford other than Public Rights of Way.

Recommendations

- Investigate how to provide green corridors in Knutsford.

Type 4: Outdoor Sports Facilities

Quantity

2.18 Outdoor sports facilities form the second largest category of open space in Knutsford with over 30ha, but only 9.68ha are actively available for public use and used - see Appendix B Outdoor Sports Facilities Report (Type 4), representing 0.77ha per 1,000 resident population - a shortage of 10.32ha.

2 PPG17 Typology Summary

2.19 The main sites are Knutsford High Upper School/Leisure Centre (4KBW), Knutsford Football Ground (5KNW), Knutsford Sports Club (6aKNW) and Egerton Youth Club (6bKNW). Knutsford Football Club, Knutsford Sports Club and Egerton Youth Club play a significant role in outdoor sports provision in town. There are also various private bowling clubs.

2.20 Knutsford has the following publicly accessible outdoor sports facilities in active use:

- six adult / senior football pitches - four private at Egerton Youth Club with one artificial, one private at Knutsford Football Ground, and one school/municipal at the High School/Leisure Centre, which has astro-turf used for football and hockey;
- three junior / seven a-side pitches - private at Egerton Youth Club and some of the schools have pitches but there is no dual use;
- two cricket pitches - both private;
- one rugby pitch - private and there is one other at Knutsford High Lower School with no dual use;
- three bowling greens - all private and two other sites where one bowling green has been removed and the other has no public use;
- one netball / basketball court at Knutsford High School/Leisure Centre; and
- ten tennis courts - three school, seven private and four other at Knutsford High Lower School with no dual use.

2.21 Knutsford has no municipal sports pitches apart from the astro-turf at Knutsford High School/Leisure Centre. The nearest strategic sites are the Mary Dendy site at Great Warford or the Jim Evison Playing Fields at Wilmslow.

2.22 There are unimplemented proposals in the [Macclesfield Local Plan](#) for playing fields/pitches at Longridge - saved policy RT6 (3) - and Manchester Road adjoining Knutsford Football Ground - saved policy RT6 (4).

Quality

2.23 In Appendix B Outdoor Sports Facilities Report the quality of each pitch, bowling green and so on is assessed. The overall standard of outdoor sports provision in Knutsford is good and the quality of the 39 separate outdoor facilities listed in the Appendix is summarised as:

- two excellent
- 35 good
- one poor
- one not scored

2.24 The poor quality facility is Brook Street Bowling Green site where the bowling green area is now used as a beer garden for the public house.

2 PPG17 Typology Summary

Accessibility

2.25 Most areas of Knutsford are within 20 minutes drive time of the astro-turf facility at Knutsford High School/Leisure Centre but the other strategic sites are at Jim Evison in Wilmslow and Mary Dendy, Great Warford. The majority of the outdoor sports facilities are in the western and north western parts of the town. Residents in eastern and southern Knutsford are beyond the 15 to 20 minutes walking distance threshold of a local pitch facility. There are no local municipal pitches for residents to use.

Biodiversity

2.26 Some schools have wildlife/garden areas. The larger outdoor sports sites have space to develop wildlife areas where appropriate.

Issues

2.27 There is a shortage in outdoor provision and there are no municipal playing pitches in Knutsford. There are unimplemented proposals in the [Macclesfield Local Plan](#) for playing fields/pitches at Longridge - saved policy RT6 (3) - and Manchester Road adjoining Knutsford Football Ground - saved policy RT6 (4). Residents in eastern and southern Knutsford are beyond the 15 to 20 minutes walking distance threshold of a local pitch facility.

Recommendations

- Address the need for additional pitch facilities in Knutsford.
- Consider how to deliver the proposals in the [Macclesfield Local Plan](#) for playing fields/pitches at Longridge - saved policy RT6 (3) - and Manchester Road adjoining Knutsford Football Ground - saved policy RT6 (4).
- Consider how to improve accessibility to outdoor sports facilities for residents in eastern and southern Knutsford.

Type 5: Amenity Greenspace

Quantity

2.28 Knutsford has 33 sites in this category: 28 primary typology and five secondary typology. The sites vary with small amenity areas of grass, shrubs and trees that green the residential environment, such as the Manor Park area (sites 5KOW, 6KOW, 8KOW and 20 to 23KOW); small pocket parks such as Ashworth Park (8KBW and 10KBW); areas of landscaping and larger multi-use sites including wildlife areas, play areas and parks, for example Sanctuary Moor (4KNBW), Longridge (25KOW) and The Moor (CKNW).

2 PPG17 Typology Summary

2.29 In some areas the amenity open space is the only open space in that neighbourhood such as Ashworth Park and parts of Manor Park.

Quality

2.30 In terms of quality one was assessed as excellent - The Moor - 16 as good, 14 average and two poor. The sites that scored average or poor often needed additional facilities to improve the quality such as paths, planting, seating or bins.

Accessibility

2.31 Some areas of Knutsford have more limited access to amenity open space, being at the edge of the 5 to 10 minutes walking distance threshold, such as north-west Knutsford.

Biodiversity

2.32 Some of the larger amenity areas offer opportunities for varied planting and the creation of wildlife habitats. Sanctuary Moor is a very important large amenity area and wildlife area; it is a large wooded area of wetland that runs along the back of the properties facing Legh Road and Toft Road and it is designated as a Site of Biological Importance and classed as a Nature Conservation Priority Area.

Issues

2.33 Some densely populated areas of Knutsford have low amounts of internal green space such as in the north-west; in other areas the amenity open space is often the only open space in that area such as Ashworth Park. About 50 per cent of the sites are only average quality and need additional facilities such as paths, planting and bins.

Recommendations

- Increase the provision of amenity green space in the higher density residential areas.
- Endeavour to upgrade poorer quality sites through available funding mechanisms.

2 PPG17 Typology Summary

Type 6: Provision for Children & Teenagers

Quantity

2.34 Knutsford has 2.09ha of children's play space, representing 0.17ha per 1,000 resident population, leaving a shortfall of 0.43ha per 1,000 - a shortage of 5.41ha. The provision consists of six sites with eight facilities that vary from kickabouts to playgrounds - see Appendix C Provision for Children & Teenagers Report (Type 6). The provision can be summarised as:

- three playgrounds
- three kickabouts
- one multi-use games area
- one grassed informal area for play

2.35 The Moor/Coronation Square (CKNW) is in the centre of Knutsford and serves the whole town. Shaw Heath/Longridge (13KOW) serves the Longridge area in the north-east of Knutsford and has had new play equipment on both sites at Southfields and Birkin Brook.

2.36 Knutsford residents can access the adventure playground in Tatton Park but this is 4km from Knutsford town centre.

Quality

2.37 The quality of the facilities range from average to excellent. The Moor is a Green Flag/excellent facility and Shaw Heath/Longridge has benefited from recent upgrades. In total there is one excellent site, three good and four average.

Accessibility

2.38 Accessibility to children's play facilities varies. The Moor is in the centre of Knutsford and Shaw Heath caters for the north-east but the north-west, south east and south-west areas of Knutsford are beyond the 5 to 10 minutes walking threshold.

Biodiversity

2.39 The Moor already caters for biodiversity with its varied habitats as does Shaw Heath with its areas of woodland. There are always opportunities to vary planting and provide bird and bat boxes.

Issues

2.40 There is a shortage of children's play facilities in Knutsford. Some areas in the north-west, south-west and south-east of Knutsford are beyond the 5 to 10 minutes walking threshold. As the main facilities are concentrated in central and north-eastern areas there is considerable pressure on these sites.

2 PPG17 Typology Summary

Recommendations

- Address the shortage in children's play provision particularly for residents in the north-west, south-west and south-east of Knutsford.

Type 7: Allotments, Community Gardens & Urban Farms

Quantity

2.41 There are three allotment facilities in Knutsford: Mereheath Lane (8KNW), Sparrow Lane (10KNBW) and Warren Ave (1KNW). The sites are managed by Cheshire East Council and rented from the Tatton Estate. The sites are all well used by the Knutsford Allotment Society.

Quality

2.42 The sites vary in quality from excellent at Mereheath Lane and good at Warren Ave to average at Sparrow Lane.

Accessibility

2.43 Residents in south-west and north-east Knutsford are furthest away from an allotment facility. Sparrow Lane is the most central facility in the east of Knutsford whilst the Mereheath Lane site is fairly remote on the north-western side of Knutsford.

Biodiversity

2.44 There are opportunities to improve biodiversity on sites with boundary planting and composting.

Issues

2.45 There is a shortage of allotment facilities in Knutsford particularly in the south-west and north-east of the town.

Recommendations

- Address the need for additional allotment facilities.

Type 8: Cemeteries & Churchyards

Quantity

2.46 The main facility in this category is St John's Church and churchyard/cemetery (EKNW). This historic landmark in the centre of Knutsford forms part of the network of open space in the town centre.

2 PPG17 Typology Summary

Quality

2.47 The site is a good quality, well maintained site.

Accessibility

2.48 St John's is in a central location with good access and is accessible by public transport.

Biodiversity

2.49 The site has mature trees and some landscaping that contribute towards the biodiversity of the site.

Issues

2.50 This prominent landmark and associated open space is an important part of the town centre network of open space, which should be protected and maintained.

Recommendations

- Protect and maintain the historic landmarks and associated open spaces.

Type 9: Accessible Countryside in Urban Fringe Areas

Quantity

2.51 Knutsford is fortunate in having Tatton Park to the north of the town, which is owned by the National Trust and managed by Cheshire East Council. The historic parkland stretches over 400ha, and includes 90ha - incorporating Tatton Mere - that is designated as a Site of Special Scientific Interest. The site is also a Ramsar site. Tatton is a Grade II* Registered Park and in addition to the decorative and formal Italian and Japanese gardens, there are many clumps of trees and coverts as well as solitary trees that are part of the designed parkland.

Quality

2.52 The site is of excellent quality and well maintained.

Accessibility

2.53 Tatton Park is very accessible to the residents of Knutsford with the main entrance being located to the north of the town centre. Knutsford Local Area Partnership in conjunction with the Mid Cheshire Rail Users' Association have produced a Rail Walks Leaflet, which contains a route exploring Knutsford town

2 PPG17 Typology Summary

centre and Tatton Park, starting from the railway station in Knutsford. Residents in the southern and north eastern parts of Knutsford have the furthest to travel to access Tatton's countryside facilities.

Biodiversity

2.54 Tatton Park has varied habitats. Dog Wood and Tatton Mere Covert are both ancient broadleaved woodlands with a rich and varied ground flora. Shawheath Plantation is a mature plantation woodland with a number of introduced species.

Issues

2.55 Residents in southern and north eastern Knutsford have more limited access to countryside facilities.

Recommendations

- Improve access to countryside facilities for residents in southern and north-eastern Knutsford.

Type 10: Civic Spaces

Quantity

2.56 There are no civic spaces in Knutsford.

3 Conclusion

3.1 Shortages exist in outdoor sports provision, with a usable adult supply of 0.77ha per 1,000 resident population - a shortage of 10.32ha - and a lack in children's play provision, with a supply of 0.17ha per 1,000 resident population - a shortage of 5.41ha. Generally open space provision is poorer in the south west and there are specific shortages for some types of open space as listed.

3.2 The following points are detailed recommendations:

- Consider how to improve access to the Moor for residents living on the edge of Knutsford.
- Consider how to access funding sources for the continued protection and enhancement of Knutsford's natural and semi-natural open spaces.
- Investigate how to provide green corridors in Knutsford.
- Address the need for additional pitch facilities in Knutsford.
- Consider how to deliver the proposals in the [Macclesfield Local Plan](#) for playing fields/pitches at Longridge - saved policy RT6 (3) and Manchester Road adjoining Knutsford Football Ground - saved policy RT6 (4).
- Consider how to improve accessibility to outdoor sports facilities for residents in eastern and southern Knutsford.
- Increase the provision of amenity green space in the higher density residential areas and endeavour to upgrade poorer quality sites through available funding mechanisms.
- Address the shortage in children's play provision particularly for residents in the north-west, south-west and south-east of Knutsford.
- Address the need for additional allotment facilities.
- Protect and maintain the historic landmarks and associated open spaces.
- Improve access to countryside facilities for residents in southern and north-eastern Knutsford.

Appendices

Appendix A Quality Report

Appendix A Quality Report

<i>Knutsford</i>		<i>Typology</i>									
		1	2	3	4	5	6	7	8	9	10
<div></div>	Total area (ha)	0.00	48.51	0.00	31.39	12.22	6.22	2.57	0.61	0.00	0.00
	Number of sites	0	13	0	15	33	6	3	1	0	0
<div></div>	(ha)	0.00	0.28	0.00	0.08	0.35	0.00	0.00	0.00	0.00	0.00
	(number)	0	1	0	1	2	0	0	0	0	0
<div></div>	(% poor)	0.0%	0.6%	0.0%	0.3%	2.9%	0.0%	0.0%	0.0%	0.0%	0.0%
	Poor Quality										
<div></div>	(ha)	0.00	23.57	0.00	8.35	3.36	3.16	0.94	0.00	0.00	0.00
	(number)	0	6	0	2	14	2	1	0	0	0
<div></div>	(% average)	0.0%	48.6%	0.0%	26.6%	27.5%	50.9%	36.6%	0.0%	0.0%	0.0%
	Average Quality										
<div></div>	(ha)	0.00	14.94	0.00	22.96	6.40	2.94	0.34	0.00	0.00	0.00
	(number)	0	5	0	12	16	3	1	0	0	0
<div></div>	(% good)	0.0%	30.8%	0.0%	73.1%	52.4%	47.3%	13.2%	0.0%	0.0%	0.0%
	Good Quality										
<div></div>	(ha)	0.00	9.72	0.00	0.00	2.11	0.11	1.29	0.61	0.00	0.00
	(number)	0	1	0	0	1	1	1	1	0	0
<div></div>	(% excellent)	0.0%	20.0%	0.0%	0.0%	17.3%	1.8%	50.2%	100.0%	0.0%	0.0%
	Excellent Quality										

Appendix B Outdoor Sports Facilities Report (Type 4)

Appendix B Outdoor Sports Facilities Report (Type 4)

Type 4 Facilities: All Facilities (Knutsford)

#	Ref	Site Name	Settlement	Ward	Type	No	Size	Ownership	Quality	Art?	Comm?	Club	Frequency	Comments
504	11KB W	Bexton Primary School	Knutsford	Knutsford	Football pitches - junior / 7aside	1		School	Good	Yes	No			
264	11KB W	Bexton Primary School	Knutsford	Knutsford	Football pitches - junior / 7aside	2		School	Good	No	No			
505	9KNB W	Brook Street Bowling Green	Knutsford	Knutsford	Bowling greens	1		Private	Poor	No				Site now used as a beer garden for the public house
255	5KNB W	Crosstown Bowling Green and Social Club	Knutsford	Knutsford	Bowling greens	1	0.2	Private	Excellent	No	Yes	Crosstown Bowling Club	Regular / Frequent	
315	6bKN W	Egerton Youth Club	Knutsford	Knutsford	Football pitches - junior / 7aside	3	1.5	Private	Good	No	Yes	Egerton Youth Club	Regular / Frequent	Members only - but website indicates anyone can join (small subscription fee applies).
314	6bKN W	Egerton Youth Club	Knutsford	Knutsford	Football pitches - adult / senior	1	0.7	Private	Good	Yes	Yes	Egerton Youth Club	Regular / Frequent	Members only - but website indicates anyone can join (small subscription fee applies).
316	6bKN W	Egerton Youth Club	Knutsford	Knutsford	Rugby pitches	1	0.8	Private	Good	No	Yes	Egerton Youth Club	Regular / Frequent	Members only - but website indicates anyone can join.
313	6bKN W	Egerton Youth Club	Knutsford	Knutsford	Football pitches - adult / senior	3	2.1	Private	Good	No	Yes	Egerton Youth Club	Regular / Frequent	Members only - but website indicates anyone can join (small subscription fee applies).
310	5KNW	Knutsford Football Ground	Knutsford	Knutsford	Football pitches - adult / senior	1	0.7	Private	Good	No	Yes	Knutsford Football Club	Regular / Frequent	Used throughout the football season.
259	3KBW	Knutsford High School (Lower)	Knutsford	Knutsford	Football pitches - junior / 7aside	1		School	Good	Yes	No			
260	3KBW	Knutsford High School (Lower)	Knutsford	Knutsford	Netball / basketball courts	1		School	Good	Yes	No			
258	3KBW	Knutsford High School (Lower)	Knutsford	Knutsford	Tennis courts	4		School	Good	Yes	No			

Appendix B Outdoor Sports Facilities Report (Type 4)

#	Ref	Site Name	Settlement	Ward	Type	No	Size	Ownership	Quality	Art?	Comm?	Club	Frequency	Comments
257	3KBW	Knutsford High School (Lower)	Knutsford	Knutsford	Rugby pitches	1		School	Good	No	No			
262	4KBW	Knutsford High School (Upper)/Leisure Centre	Knutsford	Knutsford	Nethall / basketball courts	1	0.08	School	Good	Yes	Yes		Regular / Frequent	let out from Easter to August
261	4KBW	Knutsford High School (Upper)/Leisure Centre	Knutsford	Knutsford	Football pitches - adult / senior	1	0.7	School	Good	Yes	Yes	Knutsford Hockey Club	Regular / Frequent	The astro-turf is used for football and hockey - can be split into 3 mini- pitches; used by Knutsford hockey club for matches and training
263	4KBW	Knutsford High School (Upper)/Leisure Centre	Knutsford	Knutsford	Tennis courts	3	0.15	School	Good	Yes	Yes		Regular / Frequent	let out from Easter to August
312	6aKN W	Knutsford Sports Club	Knutsford	Knutsford	Tennis courts	7	0.35	Private	Good	Yes	Yes	Knutsford Sports Club	Regular / Frequent	Used throughout the year.
311	6aKN W	Knutsford Sports Club	Knutsford	Knutsford	Cricket pitches	1	1	Private	Good	No	Yes	Knutsford Sports Club	Regular / Frequent	Used throughout the year.
318	DKNW	Manchester Road Bowling Green	Knutsford	Knutsford	Bowling greens	1	0.2	Private	Good	No	No	Knutsford Conservative Club	Regular / Frequent	
462	16KO W	Manor Park Primary School	Knutsford	Knutsford	General sports fields used for informal games	1		School	Good	No				Knutsford Children's Centre use the field
506	12KNB W	Masonic Hall Bowling Green	Knutsford	Knutsford	Bowling greens	1		Private						Masonic Hall use only
317	7KNW	Mereheath Lane Bowling Green	Knutsford	Knutsford	Bowling greens	1	0.2	Private	Good	No	No	Knutsford Bowling Club	Regular / Frequent	
256	7KNB W	Toft Cricket Club	Knutsford	Knutsford	Cricket pitches	1	1	Private	Excellent	No	No	Toft Cricket Club	Regular / Frequent	Seasonal use of the pitch
Totals:						39	9.68							

Appendix C Provision for Children & Teenagers Report (Type 6)

Appendix C Provision for Children & Teenagers Report (Type 6)

Type 6 Facilities: All Facilities (Knutsford)

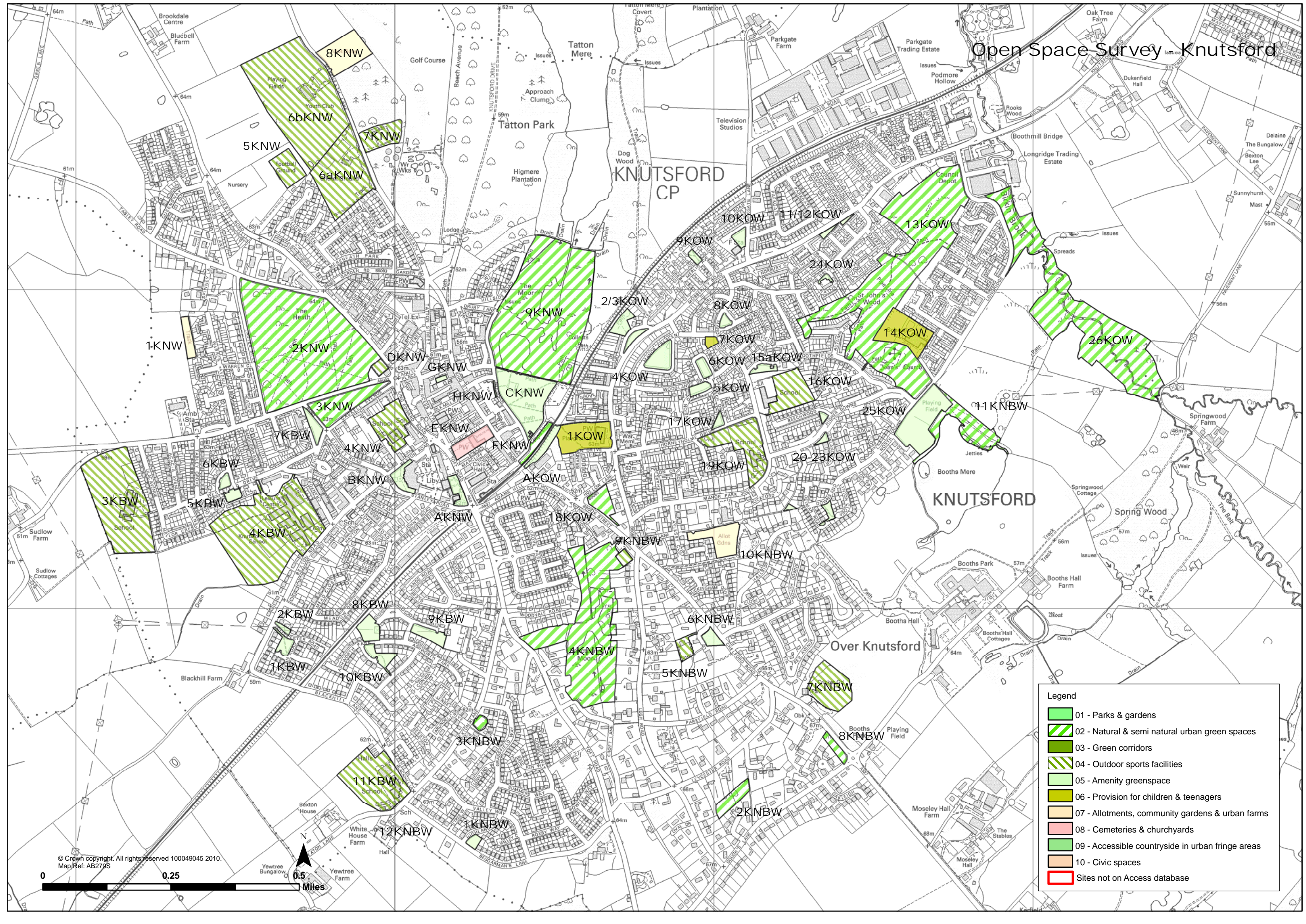
#	Ref	Site Name	Settlement	Ward	Type	No	Size	Ownership	Quality	Comments
279	25KO W	Longridge	Knutsford	Knutsford	Kickabout	1	0.5	Municipal	Average	well used- very worn in places, goals look tired
274	7KOW	Manor Crescent	Knutsford	Knutsford	Other	1	0.19	Municipal	Average	Grassed fenced area for children's play
273	1KOW	Mobberley Road	Knutsford	Knutsford	Kickabout	1	0.5	Municipal	Average	small 5 aside pitch
277	13KO W	Shaw Heath/Longridge	Knutsford	Knutsford	Playground	1	0.1	Municipal	Good	Birkin Brook end - junior play ages 8-13 - new facility - basket swing, zip wire, altima - flag pole you climb, double flat bar swing set, see-saw, tunnel etc
276	13KO W	Shaw Heath/Longridge	Knutsford	Knutsford	Playground	1	0.1	Municipal	Good	Southfields site for younger children aged 2-8 - new facility - includes see-saw, springy, slide, bird's nest swing, 2 swings, monkey bar
275	13KO W	Shaw Heath/Longridge	Knutsford	Knutsford	Kickabout	1	0.5	Municipal	Average	
309	14KO W	St Johns Wood Community Centre	Knutsford	Knutsford	MUGA	1	0.1	Municipal	Good	Used for school holiday activities
308	CKNW	The Moor/Coronation Square	Knutsford	Knutsford	Playground	1	0.1	Municipal	Excellent	
Totals:						8	2.09			

Appendix D Potential Future Site Upgrade Information

Appendix D Potential Future Site Upgrade Information

There is no information on potential future site upgrades.

Open Space Survey Knutsford



Legend

- 01 - Parks & gardens
- 02 - Natural & semi natural urban green spaces
- 03 - Green corridors
- 04 - Outdoor sports facilities
- 05 - Amenity greenspace
- 06 - Provision for children & teenagers
- 07 - Allotments, community gardens & urban farms
- 08 - Cemeteries & churchyards
- 09 - Accessible countryside in urban fringe areas
- 10 - Civic spaces
- Sites not on Access database